

FAIRO FASHION®
NATURAL LINE

The Glamour of Italian Fashion

WIGS COLLECTION



INDEX	
WHY CHOOSE NATURAL LINE	PG. 4
TESTIMONIALS	PG 6
WIG PRODUCTION	PG 18
OUR HAIR	PG 22
OUR CAPS	PG 24
OUR COLORS	PG 30
ALOPECIA – MEDICAL THERAPY	PG 32
OUR WIG STYLES	PG 34
CARE AND MAINTENANCE PLUS 12	PG 76

ABOUT US

We are close to all those women who at some point in their lives have to face difficult times such as hair loss due to chemotherapy or alopecia whether it be areata, universal or androgenetic. Our attention and care are focused on the development and production of not just ordinary wigs and hairpieces but rather on trying to find valid solutions. Experience, innovation and Italian taste for fashion produce a Fair Fashion Natural Line brand in constant evolution, which offers exceptional wigs with a highly accurate design. Quality is the most important aspect of wig making, and it is guaranteed by our competence and experience in the careful selection of natural hair. We've been offering, since 1975, true handcrafted custom-made wigs designed and tailored for women who need to wear a wig for long periods of time. Our wigs can be styled by an expert hairstylist if necessary to create an extremely natural look. Our medical wigs are certified CE and meet all the requirements of the 93/42/CEE legislation.



WHY CHOOSE NATURAL LINE

REMY HAIR WITH INTACT CUTICLES

We guarantee only premium quality hair.

Our wigs, designed for the most demanding Customers, are made with either exclusive European Remy hair with intact cuticles which are kept throughout every stage of the production process, or with high quality Indian and Asian hair that has all the characteristics of healthy natural hair.

Only a meticulous selection and careful craftsmanship can guarantee fabulous natural looking hair wigs that remain silky soft, sleek and full of volume over time.

SUPERIOR CRAFTSMANSHIP

All our wigs are handmade.

The hair is knotted on transparent, breathable mesh to help replicate the natural growth of hair from the scalp. Only one or, at the most, two strands of hair are knotted onto the cap in order to have a very natural looking wig.

EXTREMELY LIGHT-WEIGHT CAPS

Our caps are extremely light-weight and breathable, designed to guarantee a tight grip but at the same time ideal for the most sensitive skin types, in particular our Sensitive Cap and Antislip Cap which is much more than just a normal wig!

SUPERVISION AND QUALITY CONTROL

Our competence and experience are reflected in every stage of production, guaranteeing the finest quality to the minute detail.

Our wigs stay beautiful and soft longer thanks to our close monitoring and supervision, to a highly professional production process and a meticulous selection of the best raw materials available on the market (Remy hair with intact cuticles).



A CAREFUL SELECTION AND ACCURATE PRODUCTION PROCESS ENSURE
THE CREATION OF WIGS WITH BEAUTIFUL HUMAN HAIR WHICH STAY
SOFT, SHINY, SILKY AND FULL OF VOLUME OVER TIME.

TESTIMONIALS

EMMA



1. Can you tell us something about yourself?

My name is Emma, I'm 21 and I'm from Cortona, a small town in Tuscany. I moved to Bologna when I started University where I study social work. In the meantime, I decided to work in order to not completely burden my parents financially. I love reading often. Especially as a child, I spent most of my free time reading books. I still try to carve out some time for myself.

2. Do you have any plans for the future?

My main focus is definitely to become a social worker. But before I start this job, I want to take a sabbatical, right after graduation, to travel and volunteer around the world.

3. Can you describe a typical day for you?

I've never liked habit, and as frequently as I can, I try to diversify my days as much as possible. Luckily, my job is very flexible so I don't have to necessarily get back into a routine. Clearly my main commitments are study and work.

4. When did you begin to lose your hair? Did it happen quickly or was it gradual?

The first time I lost my hair was when I was 2 years old...but soon after it grew back and until the age of 10 I had hair like "normal" children. When I was 10, my hair started falling out again, very gradually, until I lost almost all of it at 13 years old.

5. How did you experience the initial stages of alopecia?

I have no memory of the first phase of alopecia, since I was only 2 years old. But that first experience made me aware of this disease, so that when my hair really did start to fall out again, I was not so surprised. Another plus point was growing up in a small village where everyone knew me and was aware of my illness. This created a much more understanding environment around me, as you can imagine. That being said, it is also true that there were not easy moments; accepting the fact that the situation was degenerating slowly, but also quite definitively, made me very sensitive and fragile to other people's comments, making me much more

insecure about myself.

6. When and how did you first have the idea of using a wig? Was it difficult to get one?

At the age of 13, when I had very little hair left, my parents and I decided to buy my first wig. It was not difficult to get one, although I recognize that I am fortunate because my family has never had any major financial problems, considering that there are no great economic advantages in their field.

7. How did you feel when you wore your first wig? Did you feel comfortable right away...or was it hard to get used to wearing it?

I vividly remember the first day I wore a wig. It was very weird because from one day to the next I went from being almost completely bald to having a big head of hair. Due to the environment in which I grew up, I spent the first day getting over the anxiety of the "first time". From then on, it was much easier. I got used to the wig almost immediately, considering it was a new accessory.

8. How do you deal with everyday life activities such as going to class or work, going out with friends, practicing your favorite sports, etc.?

As I try to give my best in every situation (in study, work and friendships), I've always been one who expects a lot from myself.

9. Do you always wear a wig? Even when you're at home?

Since I bought the first wig, I have never left home without it. While at home, I've never had any problems being without it, even now living with two of my friends in Bologna. In the early years, I thought it was impossible to think of a life without my wig, to be seen without it by others (outside of my family and my closest friends). But over the years, gradually, the range of people who I allow to see me without a wig has been widening. I still don't feel completely ready to show myself to "everyone" without it, no matter how hard I'm working on it and trying more and more to overcome this obstacle. Agreeing to have my picture taken is part of my journey.

10. How do you feel when you wear the wig? Do you feel comfortable? Or more confident? Do you like yourself?

Wearing the wig is my new normal. I feel completely comfortable wearing it. But aside from that, I do like myself more. I always say that even if my hair were to grow back, I would have a hard time taking the wig off, as I can't imagine myself with other hair, because this is me now.



11. Do you think the wig helps you to live more serenely in relationships with others?

It certainly does. My fear has always been that people could, especially with superficial acquaintances the contrary, I always prefer that people around me are aware of it because it is a normal and a fundamental aspect of who I am. I like to explain to people what alopecia is and how wearing a wig allows me to decide when and how I choose to present myself.

12. Do you like to go out with friends or go dancing? Do you let yourself go or are you constantly thinking about your wig's stability, or whether anyone notices it?

I really like company, going out with my friends and even going dancing. The fact that I wear a wig doesn't limit me in any way. I never cared if others noticed it because, as I mentioned before, I always prefer others to know.

13. Have you ever felt skin irritation? Do you ever have any irritation? Or excessive perspiration?

I have never experienced any major discomfort or irritation. As for sweating when it's hot, wearing a wig makes all the difference, but whatever the situation may be, it's never anything excessive or unbearable.

14. How many years have you been wearing Fair Fashion wigs? Compared to wigs you wore before, how would you describe our wigs made of natural hair?

I bought my first wig from Fair Fashion in 2018 after looking at the website online. I immediately noticed the quality of the hair of your Natural Line wigs, which intertwine much less. The wig I wear now,

the Ginevra model (color 8), is not at all annoying, it fits perfectly with any and every situation in my life. Thanks to its natural look, I feel completely comfortable!

15. The shell of the Lory model is made with silicone inserts. Have you ever used adhesive to fix your other wigs?

The wigs I used before always needed adhesive to stay stable, but with Fair Fashion wigs I never needed it.

16. Who else in your situation would you recommend wear a wig? Do you think it would help regain a more serene relationship with one's image?

I think that every person who experiences this illness does it in a completely subjective and particular way, depending on the moment when the hair loss occurs and the environment around them. Surely, at first the wig helps to not excessively perceive the sense of diversity that is felt and to defend oneself from possible prejudices, but I think it is important that the decision to wear a wig does not come from a rejection of the disease. It is only after the acceptance of alopecia that a person who has this disease can accept and love themselves.

17. Do you think you could go without wearing the wig today? Can you imagine not using it for a week or a month?

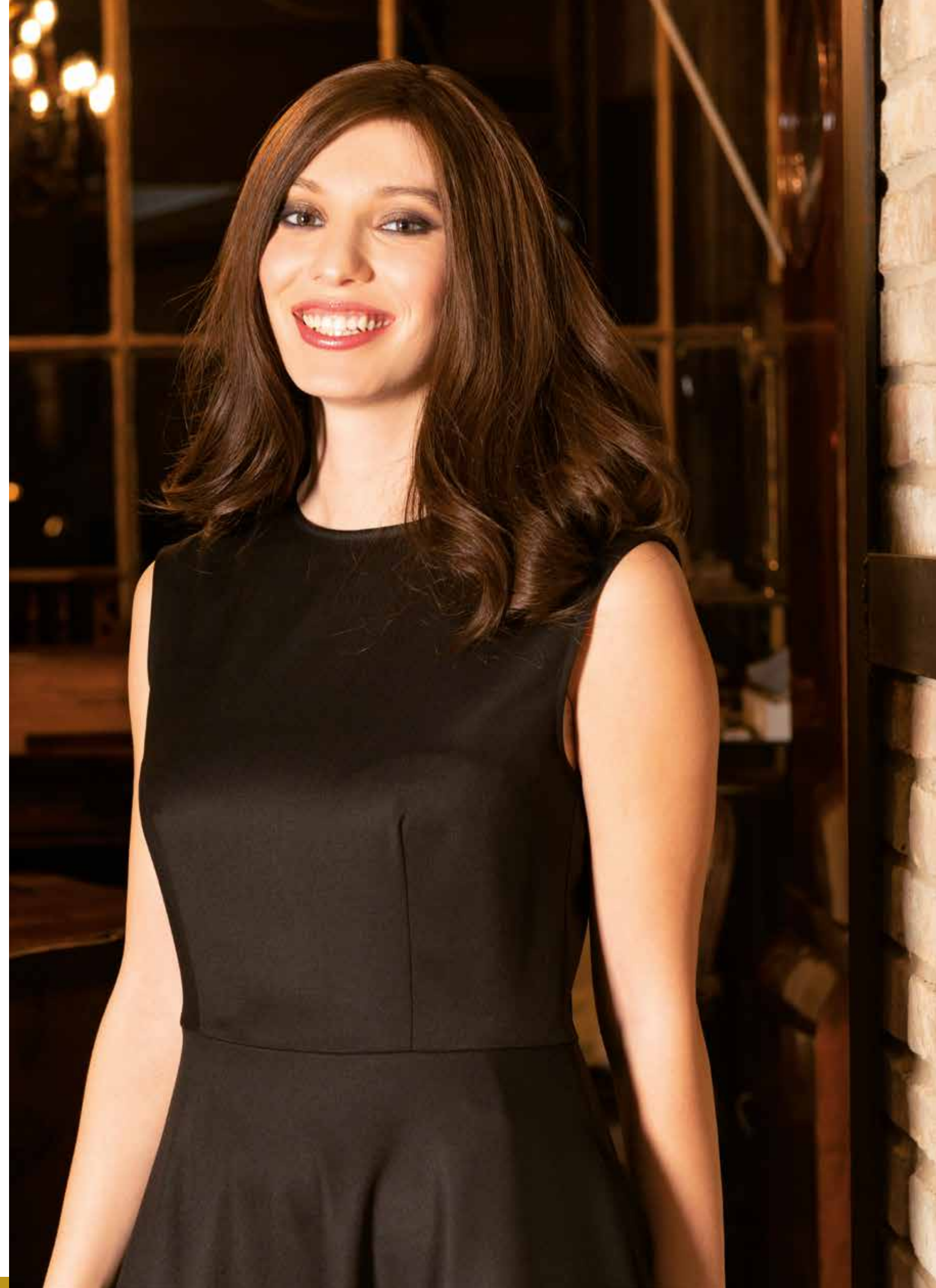
Right now, I don't think I can go without it for such a long time, but I am still struggling to achieve that type of goal.



ANTI-SLIP
Cap

Emma wears the style Ginevra, produced with the Anti-Slip Cap.

Watch the video online www.natural-line.com



TESTIMONIALS

AZZURRA



1. Can you tell us something about yourself?

My name is Azzurra. I'm 21 years old and have been living in Modena for three years now. I'm a university student and attend the Food Chemistry course in Parma. I love to do sports even if it's been a year now and can't devote myself as much I would like to because of my studies. But whenever I can, I try to be in the open air, outdoors in the middle of nature; to walk, run, clear my mind.

2. Do you have plans for the future?

I really hope to graduate, find a job that satisfies me and have a family in the future.

3. Can you describe your typical day?

My day starts early. I prepare myself carefully, put on "my hair" and go out. In the morning, I go to class and in the afternoon I study in the library. On the weekends, I almost always go out with my friends for drinks or dinner.

4. When did you start losing your hair? Did it happen quickly or was it gradual?

I lost my hair a long time ago -19 years ago to be exact. I was about two and a half years old. I only have a few memories of that time. I can recall one moment very well...I was sleeping at my grandmother's and when I woke up in the morning I saw more than half of my hair on the pillow. For a certain period of time my hair grew back and then it fell out again, until my mom shaved it all off at the beach. It was good because that way I understand what my life would have been like.

5. How did you experience the initial stages of alopecia?

I experienced the initial stages quite well actually. I was too young to understand what was happening and to suffer from the loss of something I wasn't fully aware of. Until I was 11 years old, I wore a bandana. It was one of the hardest times in my life because during those years I started to understand the importance that hair has in our society. Later I started wearing my first wigs.

6. How did you feel when you wore your first wig? Did you feel comfortable right away or was it hard to get used to wearing it?

I've never felt uncomfortable wearing wigs. My head fits any type of wig, bandana or scarf. The first time I wore one, it was a nice change for me because, without knowing what it feels like to have hair, I liked it right away!

7. How do you face the "things" of everyday life like going to class, going out with friends, practicing your favourite sport?

To be honest, after 19 years without hair and almost 11 years with the wig, I forget I should have something on my mind. I can be careful when combing it, so as not to show that it is a wig...but I no longer let the idea of wearing a wig determine the condition of my life.

8. Do you always wear a wig? Even when you're at home?

wear it almost always. Obviously not when I'm at home with my family or alone.

9. What are the feelings you have when wearing it? Do you feel comfortable? Or more confident? Do you like yourself?

I know I am different from others, so without the wig I would feel a bit uncomfortable and all my confidence could slip away. The wig helps me avoid the prying eyes, the jokes or the pity I didn't want and don't want to have. Yes, I like myself with my wig. I love her, in fact!

10. Do you like going out with friends or going dancing? Do you let yourself go or are you constantly thinking about your wig, its stability and the fact that someone may notice it?

I often go out with friends and honestly I don't think even about it. Sometimes, I fix my figure or go to the bathroom to make sure everything looks okay. A bit like a "normal" girl would, but also because very few people are aware that I wear a wig.

11. Do you wear your hair loose or do you pull it up? What are your favorite hairstyles?

I love long, wavy and bulky hair, pulled back or loose. I treat my wig as if it were real hair, as if it were really my own. Sometimes, I do loose ponytails and other times I pull back my hair and make a few locks on the sides. Nobody notices a thing!



12. Can you wash your wig? And if so, how often? Have you gained any particular kind of knowledge on this? Tell us how you take care of it!

I often wash it in the shower with your products and then comb it, holding it in place and rinse it again. I comb it and dry it with a hairdryer and then brush it to make it wavy. When I feel like it I use a curling iron to curl my hair.

13. Have you ever felt skin irritation? Have you ever had any sort of irritation? Or excessive perspiration?

No, I've never had any irritation or anything. Obviously, in the summer if it's 40 degrees and I'm sunbathing I sweat, but it's nothing excessive.

14. How many years have you been wearing Fair Fashion wigs? How did you learn about us? Did someone refer you to Fair Fashion?

I found you through my mom on the internet 7 years ago. I have always stuck with you, as there is no reason to! Now my mom and I are the ones who refer others to you.

15. Compared to the wigs you wore before, how could you best describe Fair Fashion's Natural Line wigs that feature natural hair?

Zero sweating and maximum comfort! The hair is very soft and features beautiful, very natural colors.

16. What do you like best about your wig?

I have been wearing the Lory color 2 model for some time. I really like the color and length and also the fact that nobody would ever imagine it's a wig! It's very natural. Other people say I have beautiful hair!

17. When you wear it do you feel free to move around? Do you ever feel it slipping away?

No, my wig is nice and firm.

18. For whoever else is in your situation, would you advise them to wear a wig? Do you think it would help them to regain a more serene relationship with their image?

The wig certainly helps against the ignorance, malice and curiosity of many. It helps to increase self-esteem. But the first thing to do when you live with a condition like mine is to feel beautiful with or without a wig, to accept the fact that you are not a "normal" person and that we are "different". It's often difficult to accept our differences, but if we can do it for ourselves, accepting ourselves as we are, then other people's opinions don't matter anymore.

19. Do you think you can go without the wig today? Can you imagine not using it for a week or a month, for example?

No, I wouldn't be able to go without it because it's difficult to manage in the eyes of others. One thing is clear to me: people cannot fall in love with my appearance but with the person who I really am and when this happens it means that they are really in love. In my opinion, this is really fortunate!



CONFIDENCE
Cap

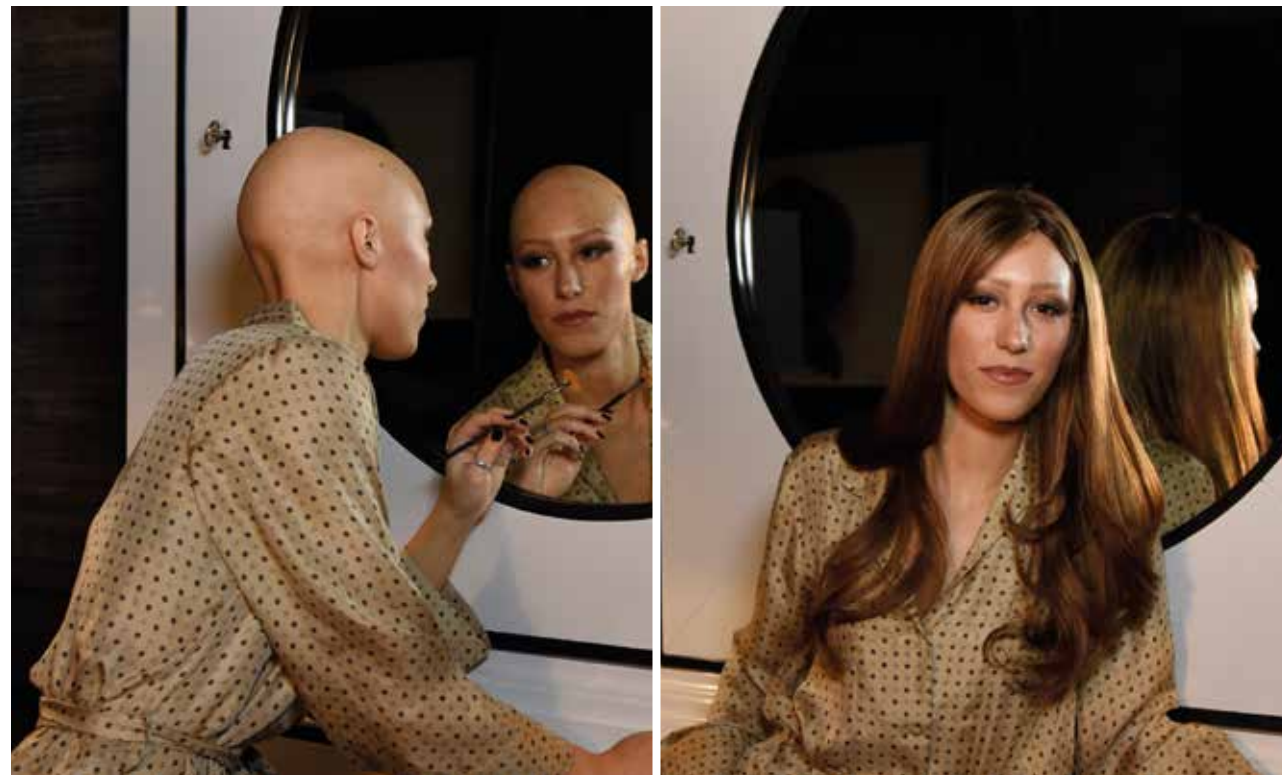
Azzurra wears the style Lory, produced with the Confidence Cap.

Watch the video online www.natural-line.com



TESTIMONIALS

CAMILLA



1. Can you tell us a little about yourself?

My name's Camilla and I'm 18 years old. I'm attending my last year of high school. After high school I'd like to study Political Science or Economics at University. I'm not really sure what I'd like to do in the future because I have so many projects in mind! I'm hoping to take up studying music again and sports which I had to stop because too busy with school.

2. When did you first start losing hair?

I was only 5 when I first started losing my hair. It just happened so fast. In just a few days it was all gone. Slowly it all grew back but then it happened again in high school.

3. How did you initially cope with alopecia?

It took us all by surprise, my parents didn't know anything about this condition and had to research its causes and possible treatments. My teacher had even "prepared" my classmates by showing them some pictures of herself with no hair (she had undergone chemotherapy when she was younger) to

help them understand that there is nothing wrong being without hair. It worked and, as a matter of fact, I have wonderful memories of my childhood.

4. When did you decide to get a wig? Was it hard to find?

It wasn't easy but after a long and careful search my parents decided to contact an American Association that sent us a wig with long platinum hair, totally inappropriate for a 5 year old! After that, we were able to find a small wig shop near us where we bought a synthetic hair wig with bangs. We continued to buy more synthetic wigs from this shop.

5. Did you wear your wig everyday when you were a child?

Yes, I wore it everyday even if I preferred wearing a headscarf when I'd go out and play with my friends because I wasn't comfortable with a wig on.

6. After a while your hair grew back but then you lost it all again...

I wore a wig up until I was 10, at that point my hair had completely grown back. Although I knew alopecia was unpredictable, I never thought that at 16 I would've lost all of my hair again. It wasn't easy at first but then I moved on.

7. Did you decide to get a new wig at that point? Was it easier to find this time than before?

It wasn't easy because several years had passed and we didn't have a lot of experience with wigs. We went back to the shop we used to buy my wigs as a child but unfortunately, they didn't have the right wigs for my age. We found another wig shop that seemed to have what I needed but after a couple of months after having purchased a human hair wig it started to thin out. At that point we surfed the net and fell upon your site and immediately saw the many wigs you offer and discovered a whole new world.

8. Compared to wigs you've worn previously how would you describe our wigs?

I immediately fell in love with them because of the quality of the hair. You can actually feel and see the difference compared to my previous ones.

9. What difference have you noticed with these new wigs?

One of the main differences is that this wig has a tighter fit. Now that I'm used to wearing it I've become a bit pickier! When I first chose the wig, I chose it because it was very nice but only after wearing it I completely fell in love with it because it stayed fit making it possible for me to move around as I pleased. With my previous wigs I'd always have to add double-sided tape to ensure it wouldn't slip off and even then I didn't feel free to do what I wanted without the thought of it falling off. I remember that on windy days I'd always joke around with my friends about it saying that sooner or later the wind would blow the wig off my head!

10. The wig you have now is a dominique, characterized by a very light-weight and breathable cap, the sensitive cap. If you compare it with the very first wigs you wore, what differences do you notice?

Dominique is made, without any doubt, with extremely high quality hair and its monofilament is very natural looking. Furthermore, because its smaller than others, it fits tighter and adheres better to my head without leaning against my ears as bigger caps of previous wigs did.



11. Our sensitive cap has been designed with non-slip silicone patches and the possibility to add double-sided tape when necessary especially for women who have a very active lifestyle and do a lot of sports. Do you use any double-sided tape?

I had to use tape with the previous wig I had purchased in the other wig shop because it didn't have a firm hold and I was always afraid it would slip off. Now it's a whole different story, I don't need to add anything to my wig.

12. Do you wear your wig everyday, for example when you go to school or go out with friends?

Yes, I practically always use it. Except maybe at home where I prefer wearing a headscarf or just pulling up the hood on my sweatshirt. Wearing a wig doesn't make me feel insecure, and I've never turned down a party or turned away from having fun just because I wear a wig. What I do though, is decide which wig to wear depending on the occasion. If I have to go dancing in a crowded place or at a pool party then I wear my older wig while I prefer using my newer wig everyday or for special occasions.

13. Do you personally wash your wig? How do you care for your wig?

I wash my wig every two weeks with specific hair products such as PLUS 12. I brush it often during the day even when I wash it. I always keep a brush in my bag!

14. You look quite happy. Do you think that your positive attitude is due to the fact that you were a small child when you first started losing hair?

Definitely, I think it can be more shocking for an adult. Since I was so young when it first happened, it's almost like having been born without hair.

It obviously depends on each individual but if you're 5 when you lose all of your hair this means that, a part from the initial shock, it becomes a part of who you are and you grow up accepting it.

15. Would you suggest wearing a wig to someone who suffers from alopecia? Do you think this could help a person accept their condition and the way they look more?

Yes, I would suggest wearing a wig but not because you need to accept yourself. A wig shouldn't be used as a mask to hide yourself behind it, but rather as an accessory that you like and that allows you to change styles whenever you like or have hair you've always dreamed of. For example, I chose a color which was completely different from my hair and that I would've never thought would look nice on me! A wig should be worn knowing that you're always that beautiful person with or without it and that you are not inferior to anybody else just because you have alopecia.

16. We admire your attitude because you don't turn away from having fun in life nor turn down doing all the things other teenagers do at your age. Do think that, at this point in your life, you could go on living without a wig?

I think it would be quite hard for me without my wig because I'm too used to wearing it! I can't even imagine myself going out without it although sometimes I've forced myself to go out without just to remind myself that I shouldn't care about what other people think



SENSITIVE
Cap

Camilla wears the style Dominique, produced with the Sensitive Cap.

Watch the video online www.natural-line.com



WIG PRODUCTION

THE IMPORTANCE OF HAIR QUALITY IN THE CREATION OF OUR WIGS

Creating a wig with premium human hair is no easy task. The selection of the hair and all of its production phases have to follow specific quality standards.

We are specialized in the production of hand-made human hair wigs with ultra lightweight caps that offer the maximum comfort.

ALL YOU NEED TO KNOW ABOUT THE PRODUCTION OF HUMAN HAIR WIGS

Wigs can either be made with human hair or with synthetic fiber, obviously wigs made with human hair have a more natural look to them.

Human hair has a unique texture and shine, its own unique color (never homogeneous but a rich tapestry of shades), a unique movement, it is softer and thinner than synthetic fibers, and can be styled.

Hair movement is the direction that the hair takes on, how it flows and falls across the face and shoulders. When talking about human hair, much depends on the length and thickness of the hair itself. Generally, the longer and thinner the hair, the more movement. But what actually influences the movement of the hair most is the state of its health.

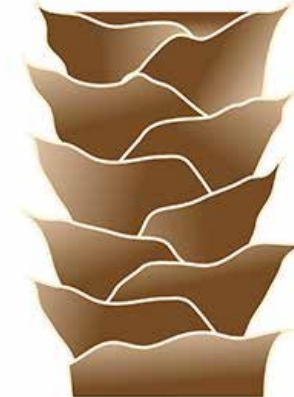
Porous hair appears lifeless and dull and chemically treated hair can appear dry.

Needless to say, healthy hair is extremely important for the creation of wigs.

HEALTHY HAIR



DAMAGED HAIR



A human hair wig is well made when it's made with healthy hair which is correctly knotted to the cap to create a natural movement and flow, creating the effect of a full head of hair.

The quality and type of hair used in the creation of a wig is one of the most important factors that distinguishes a superior quality wig from others.

The more characteristics of natural hair are preserved in the wig production process, the more the wig will seem like your own hair.

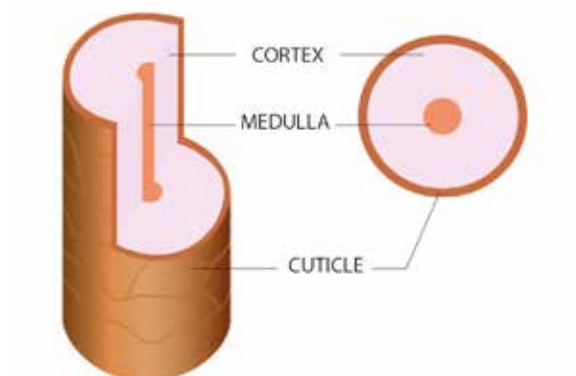
HAIR STRUCTURE AND ITS CHARACTERISTICS

Before diving into the various phases of wig production let us reflect on the structure and features of natural hair.

The Three Layers of Hair

A strand of hair is made up of three main layers:

- The medulla – the deepest layer of the hair shaft made up of cells responsible for hair growth.
- The cortex – the middle layer of the hair shaft which provides the strength, color and texture of a hair fiber.
- The cuticle – the outer layer of the hair shaft made up of overlapping flat cells that protect the hair keeping it colorful, strong and healthy.



THE CUTICLE

The cuticle is the outer layer of the hair shaft that we can actually see and touch. The health of the hair depends on the state of health of the cuticle.

The hair is healthy if the cuticle is healthy.

This layer is made up of flat cells, also known as scales, arranged like tiles on a roof with multiple overlaps and all pointing in the same direction.

The free edge of these scales points towards the end of the hair.

This particular feature of the cuticles is responsible for the shininess of the hair itself and allows the single hair strands to slide one over the other without getting tangled and knotted.

Hair is soft and shiny with the right amount of elasticity only if the cuticle is healthy and intact (that is, if the scales are smooth, regular and adhere well to the shaft).

On the other hand when the cuticle is damaged or consumed, the hair appears dull, dry, and weak, and lacks of elasticity. Bleaching, dyeing, perms or any other chemical treatments as well as excessive use of heat or aggressive hair products can cause the scales to lift, damaging the cuticle.

Beautiful and healthy hair depends on the health of the cuticle.

For this reason we select only high quality hair with intact and healthy cuticles for the creation of our wigs. This is even more important for wigs with long hair (30-35cm or more).

Specific quality standards have to be followed in all the phases of production: from finding the raw material, to the processing of the hair, up to the final packaging of the product.

SOURCING OF THE HAIR

High quality raw material is essential for high end wig production.

We select strong, healthy hair which has never been chemically treated (hair that has never been bleached, dyed nor permed).

This hair must be 100% Remy hair, this means that the hair is all aligned in the same direction from the roots to the ends with intact cuticles.

During the selection phase the donor's hair is tied into a ponytail or braid in order to keep the hair in the same direction (roots to ends as well as cuticles all pointing in the same direction). The hair is then cut off directly from the donor's ponytail or braid.

True 100% Remy hair is not easily found on the market due to a strong demand and high sourcing costs.

SORTING DIFFERENT HAIR LENGTHS

The manufacturing process continues with the sorting of the hair: the hair is unbraided and sorted according to its length.

This process is meticulously carried out so that the hair is all in the same direction.

These bundles of hair, which all have the same length, will be used to create our various wig styles.



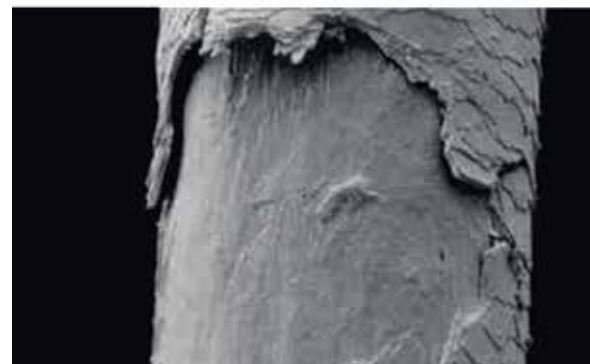
BLEACHING

After sorting the different lengths, the hair undergoes a careful and delicate bleaching process. The aim is to bleach the hair without damaging the cuticles and hair structure.

The time required for this process varies depending on the desired color. For example, blonde hair wigs (which are originally dark hair) will undergo a gradual bleaching process which can take several days.

Some wig manufactures use aggressive products to accelerate the bleaching process, cutting costs at the expense of the hair. Aggressive bleaching can permanently damage the hair and its structure, compromising its integrity.

The hair can become dry with split ends, losing its natural softness and shine. It often becomes tangled and in extreme cases the cuticles can peel off. To hide this problem, products containing silicone are often added to the hair to give temporary volume, gloss and smoothness, but after just a few times the hair is washed these products come off and the hair tends to become dull and dry and can easily tangle.



HAIR DYEING PROCESS

After bleaching the hair is colored with non aggressive products.

The hair is grouped together and dyed in a multitude of colors: black, brown, red, blonde and all the intermediate shades, including highlights, rooted colors (darker regrowth) or ombre colors

CREATION OF THE VARIOUS WIG STYLES

The hair is now ready to be used for the creation of the various wig styles.

Our wig designers, design each wig style taking into consideration, not only the technical aspects but also a person's needs and all the fundamental aspects of a wig, such as

- **HAIR THICKNESS**
- **STYLE**
- **CAP**
- **HAIR TYPE**

● **HAIR THICKNESS:** our hair experts take great care when assessing the thickness of each wig style (measured in how many grams of hair used). The wig must be natural to the eye and comfortable to wear. A wig should not be too heavy but at the same time it should recreate the natural effect of a natural head of hair therefore, neither too thin nor too full.

● **STYLE:** in most natural hair wigs the hair is hand-tied onto the cap. During this process we can give a precise direction to the hair, creating the wig's unique style. Being natural hair they can be styled to create movement and get the desired look.

● **CAP:** we use high quality, hypoallergenic materials that are gentle to the scalp. Caps must be lightweight, resistant and have a fair degree of elasticity.

● **HAIR TYPE:** the choice of hair used in creating our wigs depends on the end result we want to achieve which is also influenced by the quality of the hair, type of cap and final cost of the wig. Depending on these factors we have decided to use three different types of hair: European hair with intact cuticles, Indian/Asian hair with intact cuticles or Indian/Asian hair without cuticles.



OUR HAIR

EUROPEAN REMY HAIR WITH INTACT CUTICLES

European hair, which is becoming always harder to find on the market, has a unique texture, it is soft and shiny and has a natural movement making it difficult to understand you're wearing an actual wig. Compared to Asian hair it is notably fine, soft and silky.

In order to preserve all of its characteristics we've selected two specific caps, which we've called Natural Cap and Anti-Slip Cap, these caps have been designed to preserve and keep the cuticles intact all the way up to the roots.

The choice of this advanced cap is inevitable because with the best quality hair on the market the craftsmanship has to be the upmost best. The result is an outstanding wig that combines the quality of the materials with highly advanced craftsmanship. It has been designed for the most demanding Clients, and it stands out for its enduring quality and extreme naturalness.

The wig styles produced with European hairs are five, two of them (Emily and Rebecca) are made with virgin hairs.

"The return knot" in the Natural Cap and Anti-Slip Cap is trapped inside the layers of the lace mesh, allowing only the final part of the hair to come out of the cap. The end result is a wig with hair that has intact cuticles all facing the same direction from the roots to the ends.

INDIAN/ASIAN REMY HAIR WITH INTACT CUTICLES

We use only 100% Remy hair with intact cuticles, which has been meticulously selected for our wigs with 25/30cm long hair because it preserves all the characteristics of our own hair, such as volume and softness. The cuticles help protect the hair from the many stress factors that can damage long hair such as frequent styling with hot tools, blow dryers or rubbing against clothes. Because of the cuticles, the hair on the wigs lasts longer without drying up as fast as in other wigs. Furthermore, because the cuticles are all aligned in the same direction they prevent long hair from getting tangled.

When each strand of hair is hand-tied onto the cap a short piece of the hair comes back out from the knot in the opposite direction from the rest of the hair (except in our Natural Cap and Anti-Slip Cap). This part of hair is called "the return knot" in technical language and its cuticles are all aligned in the opposite direction from the rest of the hair. To avoid tangling we need to partially remove the cuticles in the "return knots".

INDIAN/ASIAN HAIR WITHOUT CUTICLES

With short hair wigs it's not necessary to use hair with intact cuticles. The reason for this is because short hair doesn't rub against your clothes therefore, the hair in these wigs doesn't undergo any excessive stress damaging the hair itself. In this case, we prefer to use hair with no cuticles so we can offer high quality products at affordable prices. The use of short hair with no cuticles does not affect the final quality of the wigs. But further dyeing or bleaching of the wigs may damage the hair.

The expression "100% Remy Hair" in human hair wigs is commonly used all over the world, but true remy hair with intact cuticles is not easily found on the market because of its high demand and the cost of the raw material. Many manufactures, in order to have a significant production, prefer using hair which has been collected randomly and therefore the hairs are not aligned in the same direction from the roots to the ends. The use of this second-hand hair (NON REMY) requires a different manufacturing process. The final quality of hair wigs made with this kind of second-hand hair will never be as good as hair wigs made with 100% Remy Hair with intact cuticles.

PREMIUM QUALITY VIRGIN EUROPEAN REMY HAIR WITH INTACT CUTICLES

EMILY
REBECCA

EUROPEAN REMY HAIR WITH INTACT CUTICLES

GIADA
PENELOPE
GINEVRA

INDIAN/ASIAN REMY HAIR WITH INTACT CUTICLES

ALEXIS
DOMINIQUE
HELEN
LORY
MEGAN
MIA
SARAH
IRENE

INDIAN/ASIAN HAIR WITHOUT CUTICLES

ANGEL
AURA
BRENDA
GIULIA
JOELLE
SOPHIE
VALERY

OUR CAPS

NATURAL CAP

Natural Cap is a completely breathable cap which gives a natural feeling to the wearer. The top part is made with a special lace mesh which hides the knots giving the impression that the hair grows directly from the scalp with a very natural effect..

- **Breathable – 100% hand-tied**
- **3 layer lace mesh known as French Top with invisible knotting**
- **Lace front**
- **Polyurethane patches for an optional use of double-sided tape**



STRUCTURE AND MATERIALS

The top section is made with 3 layers of lace mesh otherwise known as “French Top”, which hides the knots giving the impression that the hair grows directly from the scalp with a very natural effect.

By hiding the knot within the lace mesh makes it possible to keep the hair perfectly intact from the roots to the ends, without having the return knot in the opposite direction. This lets us work with top quality European hair with intact cuticles and which has not been chemically treated.

The back section is entirely hand-tied with a 2 layer lace mesh that prevents any hair from re-entering and makes it extremely light-weight.

This cap comes with polyurethane patches at the front, sides and back for an optional use of double-sided tape for an extra grip and tighter fit.

Wigs with Natural Cap are: Emily/Giada/Penelope

The European hair used for these styles has a unique texture which makes it soft and shiny giving it a natural movement and making it almost impossible to tell that it is an actual wig.

ANTI-SLIP CAP

Revolutionary and completely breathable, the Anti-Slip Cap differs from other caps on the market for its reliability, secure fit and natural look.

Safe and comfortable, the Anti-Slip Cap requires no glue or biadhesive tape.

The Anti-Slip Cap is kept in place by strips of medical silicone on the upper part of the cap, temples and the back of the head.

- **Breathable – 100% hand-made**
- **3 layer lace mesh known as French Top with invisible knotting**
- **Lace front**
- **Anti-slip silicone inserts**
- **Available in 3 sizes: S – M – L**



STRUCTURE AND MATERIALS

The perimeter of the cap is threaded with a strip of medical silicone to ensure maximum breathability on the scalp and a secure fit.

The upper part features a three-ply tulle “French Top” which conceals the knots, making it seem as if the hair grows directly from the scalp for an unparalleled natural look.

Concealing the tail of the knot between the layers of tulle, the “French Top” technique uses hair which is perfectly intact from the root to the tip, preventing friction between the free end of the knot and the cuticles lying in the opposite direction.

This allows us to work with the highest quality European hair with intact cuticles, preserving its best qualities without the need for treatments.

The back is tied entirely by hand on a double layer of tulle, making it exceedingly light and preventing the hair from poking through to the scalp.

Wigs made using the Anti-Slip Cap: Rebecca - Ginevra

Anti-Slip Cap is available in 3 sizes for a perfect fit, even for those women who have a smaller or larger than average head circumference. **S: size small – 52 cm circumference, M: size medium – 54 cm circumference**

L: size large – 56 cm circumference

SENSITIVE CAP

The innovative SENSITIVE CAP is the lightest cap ever produced, designed specifically for women who suffer from permanent hair loss. Years of research in close contact with women who suffer from alopecia has allowed us to gain a deep understanding of the needs and preferences of those women who have to wear a wig for long periods of time and therefore, has enabled us to produce this extraordinary light-weight cap.

It is very important that people who suffer from alopecia wear a breathable cap that is also gentle and pleasing against the scalp.

- **Lightest cap ever produced**
- **Breathable – 100% hand-tied**
- **Anti-slip Silicone strips - polyurethane patches for an optional use of double-sided tape**
- **Diamond Net**
- **Ear to ear Lace Front**
- **Available in 3 sizes: S, M, L**



STRUCTURE AND MATERIALS

The materials used in making this cap have been specifically selected to provide maximum comfort. An extra soft Diamond net in the upper part of the cap ensures both maximum breathability and comfort. The lace front goes from the forehead all the way down to the temples guaranteeing an invisible hairline ideal for those women who want to wear their hair up.

Anti-slip silicone strips have been efficiently positioned in various parts of the cap to guarantee perfect adherence to the scalp. These strips are positioned all around the top and back sections, to ensure a tight grip without the use of specific glues or tapes making this wig ideal for women with a sensitive scalp.

SENSITIVE CAP has also been designed for those women who have a very active lifestyle, such as women who are used to doing sports. Patches of polyurethane have been added to the temples and back part of the cap for an optional use of double-sided tape to ensure an extra hold.

The materials that go into producing the wig go hand in hand with the quality of the Remy Hair used, making SENSITIVE CAP an outstanding product in the NATURAL LINE collection.

Wigs with Sensitive Cap are: Dominique/Megan

Sensitive Cap is available in 3 sizes for a perfect fit, even for those women who have a smaller or larger than average head circumference. **S: size small – 52 cm circumference, M: size medium – 54 cm circumference**

L: size large – 56 cm circumference

CONFIDENCE CAP

Confidence Cap has been created for women who are experiencing temporary hair loss due to chemotherapy and radiation treatments and therefore, whose scalp can be particularly sensitive, and for those women suffering from Alopecia Universalis or Androgenetic Alopecia.

- **Breathable – 100% hand-tied**
- **Silicone strips for a stronger hold**
- **Monofilament top**
- **Diamond Net**
- **Lace Front**



STRUCTURE AND MATERIALS

This cap, which is completely breathable, is made with a monofilament top and 100% natural materials such as a light cotton mesh at the back.

The lace across the front of the cap, known as lace front, guarantees a natural and invisible hairline.

Anti-slip silicone strips have been ergonomically placed on the top part of the cap and temples to prevent skin irritation, and to avoid the use of adhesives such as specific glues or double-sided tape.

This significantly improves the wig hold, giving added security to the wearer and making it suitable for an active lifestyle.

Medical-grade silicone is non-toxic and hypoallergenic and therefore ideal even for the most sensitive skin types.

By avoiding the use of glue or tape, this wig can be worn even post treatment and with hair regrowth.

All of these features make this cap ideal for women undergoing chemotherapy or any other medical treatments.

The Diamond Net, which sits directly on the scalp, has been added to the styles Alexis, Lori and Mia.

The Diamond net is extra soft and placed at the top of the cap to ensure breathability and comfort..

Wigs with the Confidence Cap are: Brenda/Giulia/Joelle

Wigs with the Confidence Cap + Diamond net are: Alexis/Lory/Mia.

We offer a wide selection of styles and colors to help women find the right wig which will not alter their appearance nor be noticed.

COMFORT CAP

Comfort Cap is extremely light weight and entirely hand-tied..

- Extra-light and breathable cap
- 100% hand-tied
- Monofilament top



STRUCTURE AND MATERIALS

Monofilament top with stretch cotton mesh at the back.
A strip of polyurethane is positioned across the front to better secure the wig to the scalp with double-sided tape if necessary.
This cap, which is handcrafted paying close attention to every detail, is extremely light-weight and comfortable to wear. The Natural Line collection has four different wig styles with this comfort cap therefore offering a wider selection of styles and colors.
Wigs with the Comfort Cap are: Aura/Sarah/Sophie/Valery.

BASIC CAP

Basic Cap is a handcrafted cap with a monofilament top section which gives the appearance that the hair is actually growing from the scalp and which allows an excellent ventilation. It is also characterized by concentric wefts on the back section.

- Extremely resistant
- Breathable
- Monofilament top



STRUCTURE AND MATERIALS

The machine-made wefts are completely lined to secure more comfort especially on the scalp.
The result is a highly resistant and long-lasting cap.
The use of double-sided tape is optional and can be added to the front section onto the polyurethane strip.
Wigs with the basic cap are: Irene/Angel/Helen.

OUR COLORS

Wearing a Natural Line wig gives you the feeling of having your own hair back. Not only because of our extra thin, light-weight, hand-crafted caps, but also thanks to the extremely natural range of modern colors available. Our deep knowledge and close collaboration with leading hair stylists has given us the possibility to create a line of well thought through wigs:

- **Innovative Caps**
- **Natural hair of the highest quality**
- **Modern and extremely natural colors**

Our attention to detail and style and our expertise, given by the many years of experience in this field, can also be perceived in the wide range of natural colors offered in our wig collection.

Fair Fashion Natural Line wigs are available in more than 36 colors.

Our aim is to offer a wide choice of colors to ensure that our customers don't need to dye their wig to make it similar to their own color.

Modern hairstyles and fashionable colors allow you to maintain or improve your look without anyone spotting the difference.

WHY ARE OUR WIG COLORS SO NATURAL?

We offer various multi-tone colors to produce a more natural look. A natural head of hair will never be all of the same color but rather it is made up of various strands of hair with similar color tones. It often has slightly different shades or natural highlights caused by sunlight. Our expert wigmakers follow precise patterns when creating a wig and insert different hair colors to create natural highlights and movement and give our wigs a very natural appearance.

Our colors are always multi-tone:



We offer many different highlighted colors as well, from browns to blondes:



Over the years traditional hair colors have been replaced by a multitude of shades. For this reason we have added some ombre colors to our wigs:



And rooted colors / regrowth effect:



Since we use 100% natural hair, it's possible to customize the color of each wig. However, we recommend having your wig dyed only by a professional salon rather than changing the color on your own. We strongly advise against bleaching any wig because this can cause permanent damage to the hair. Coloring of the wig should always be from lighter tones to darker tones.

ALOPECIA AND HAIR LOSS DUE TO THERAPY

HAIR THINNING AND HAIR LOSS DUE TO ALOPECIA AREATA

Androgenetic alopecia or alopecia areata often leads to severe emotional trauma that can prevent a person from living happily.

Today you can rely on a new line of wigs designed to help and improve your natural feminine beauty. Natural Line wigs give you the emotions and sensation of having your own natural hair back again, maintaining and even improving your image without people even noticing you are wearing a wig.

No other wigs adapt perfectly to a woman's face features as our wigs, enhancing her image and making her feel perfectly at ease. Natural Line wigs will become an essential part of your wardrobe.

Natural Line wigs help you cope with the negative emotions attached to thinning or complete hair loss due to Alopecia and can help you live a full and complete life.

Fair Fashion is proud to have created a line of wigs, Natural Line, where strict technical requirements meet aesthetic quality.

The caps are light-weight and breathable, designed for a firm hold while respecting the most sensitive skin types. All hair used in Natural Line wigs is 100% natural Remy Hair of the highest quality.

These technical features together with an exquisite design result in the creation of beautiful wigs that are natural to the eye and extremely comfortable to wear.

Our wig styles and colors are in line with the latest fashions to satisfy the needs of those women who have to face a very delicate and difficult moment in their life, such as hair loss.

HAIR LOSS DUE TO CHEMOTHERAPY AND RADIOTHERAPY

Hair loss is a well-known side effect of chemotherapy (and radiotherapy). The loss of hair is caused by damage to the hair follicles – the cells responsible for hair growth.

From a medical point of view hair loss due to chemotherapy is an unwanted side effect though understandably a secondary problem. Nevertheless, hair loss can affect a person emotionally, and should not be overlooked when weighing up the overall state of health of a person.

For many women, hair loss adds to the trauma, having a negative effect on their self-confidence self-esteem during an already emotionally fragile and difficult time in their life.

We believe that simply having the possibility to look in the mirror and feel better about yourself can help empower a suffering person to better face up to their illness and therapy.

Wearing a wig can offer a valuable psychological support. Conserving your original look can help a person carry out their day to day activities with greater ease.

CE CERTIFICATION

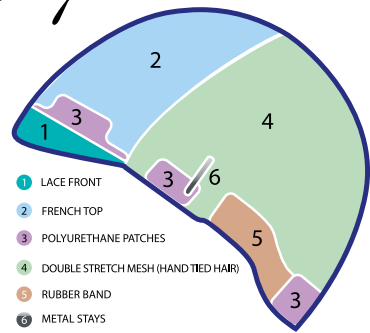
Our medical wigs are certified CE and meet all the requirements of the 93/42/CEE legislation.

Essential aspect for the safety regarding the materials employed are the clinical evaluation tests and the test for determining the biocompatibility in accordance with the international standards EN-ISO 10993-1, which assure the use of hypoallergenic materials in the production process.



OUR WIG STYLES

NATURAL Cap



EMILY

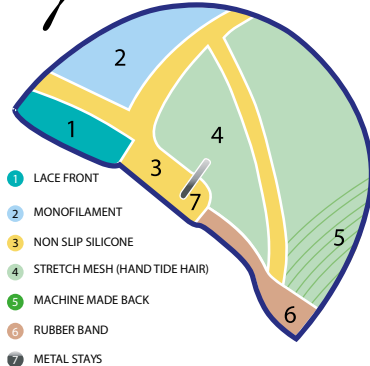


GIADA



PENELOPE

CONFIDENCE Cap



GIULIA



JOELLE



BRENDA

ANTI SLIP Cap

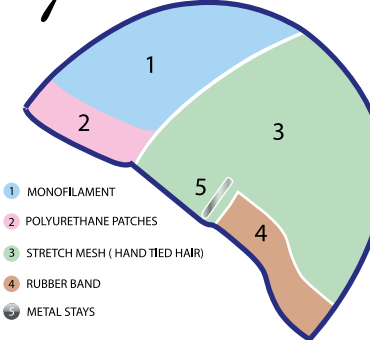


REBECCA



GINEVRA

COMFORT Cap



SARAH



SOPHIE



VALERY



AURA

SENSITIVE Cap

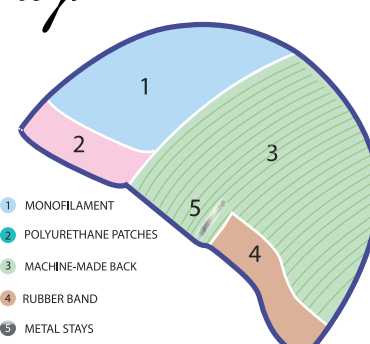


MEGAN



DOMINIQUE

BASIC Cap



ANGEL

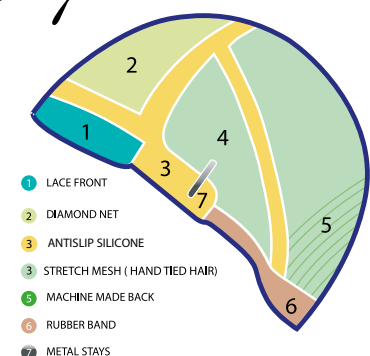


IRENE



HELEN

CONFIDENCE Cap



LORY



ALEXIS



MIA



COLOR SHOWN 12/14/16

REBECCA

100% VIRGIN EUROPEAN REMY HAIR WITH INTACT CUTICLE

ANTI-SLIP
Cap



Hair Length
Front 20 cm / Crown 20 cm / Sides 20 cm / Nape 20 cm
Overall Length 35 cm
Weight 135 gr

ANTI-SLIP CAP

- Breathable – 100% hand-made
- 3 layer lace mesh known as French Top with invisible knotting
- Lace front
- Anti-slip silicone inserts
- Available in 3 sizes: S – M – L



COLOR SHOWN 12/14/16



COLOR SHOWN 12/14/16



COLOR SHOWN 12/14/16

AVAILABLE COLORS (European Hair Color Ring)



2/4 4/6 8 8/14 10/12 12/14/16



GINEVRA

100% EUROPEAN REMY HAIR WITH INTACT CUTICLE

ANTI-SLIP
Cap



Hair Length
Front 30 cm / Crown 30 cm / Sides 30 cm / Nape 30 cm
Overall Length 45 cm
Weight 175 gr

ANTI-SLIP CAP

- Breathable – 100% hand-made
- 3 layer lace mesh known as French Top with invisible knotting
- Lace front
- Anti-slip silicone inserts
- Available in 3 sizes: S – M – L



COLOR SHOWN 4/6



COLOR SHOWN 4/6



COLOR SHOWN 4/6

AVAILABLE COLORS (European Hair Color Ring)



2/4



4/6



8



8/14



10/12



12/14/16



COLOR SHOWN 4/6



CCOLOR SHOWN 10/12

EMILY

100% VIRGIN EUROPEAN REMY HAIR WITH INTACT CUTICLE

NATURAL
Cap



Hair Length
Front 20 cm / Crown 20 cm / Sides 20 cm / Nape 20 cm
Overall Length 35 cm
Weight 135 gr

NATURAL CAP

- Breathable – 100% hand-tied
- 3 layer lace mesh known as French Top with invisible knotting
- Lace front
- polyurethane patches for an optional use of double-sided tape



COLOR SHOWN 10/12



COLOR SHOWN 10/12



COLOR SHOWN 10/12

AVAILABLE COLORS (European Hair Color Ring)



2/4 4/6 8 10/12 8/14 12/14/16



GIADA

100% EUROPEAN REMY HAIR WITH INTACT CUTICLE

NATURAL
Cap



Hair Length
Front 30 cm / Crown 30 cm / Sides 30 cm / Nape 30 cm
Overall Length 45 cm
Weight 175 gr

NATURAL CAP

- Breathable – 100% hand-tied
- 3 layer lace mesh known as French Top with invisible knotting
- Lace front
- polyurethane patches for an optional use of double-sided tape



COLOR SHOWN 8/14



COLOR SHOWN 8/14



COLOR SHOWN 8/14

AVAILABLE COLORS (European Hair Color Ring)





PENELOPE

100% EUROPEAN REMY HAIR WITH INTACT CUTICLE

NATURAL
Cap



Hair Length
Front 40 cm / Crown 40 cm / Sides 40 cm / Nape 40 cm
Overall Length 55 cm
Weight 215 gr

NATURAL CAP

- Breathable – 100% hand-tied
- 3 layer lace mesh known as French Top with invisible knotting
- Lace front
- polyurethane patches for an optional use of double-sided tape



COLOR SHOWN 12/14/16



COLOR SHOWN 12/14/16



COLOR SHOWN 12/14/16

AVAILABLE COLORS (European Hair Color Ring)



COLOR SHOWN 12/14/16



DOMINIQUE

100% REMY HUMAN HAIR WITH INTACT CUTICLE

SENSITIVE
Cap



Hair Length
Front 41 cm / Crown 43 cm / Sides 41 cm / Nape 42 cm
Overall Length 66 cm
Weight 209 gr

SENSITIVE CAP

- Lightest cap ever produced
- Breathable – 100% hand-tied
- Anti-slip Silicone strips – polyurethane patches for an optional use of double-sided tape
- Diamond Net
- Ear to ear Lace Front
- Available in 3 sizes: S, M, L



COLOR SHOWN 6/8SH30

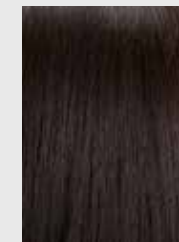


COLOR SHOWN 6/8SH30

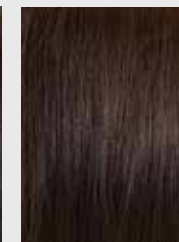


COLOR SHOWN 6/8SH30

AVAILABLE COLORS



2/4



4/6



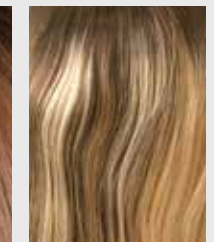
8/32



8R10/12



8R27/30



8R14/25



9R28/25



6/8SH30



7SH16/101



COLOR SHOWN 6/8SH30

MEGAN

100% REMY HUMAN HAIR WITH INTACT CUTICLE

SENSITIVE
Cap



Hair Length
Front 25 cm / Crown 25 cm / Sides 25 cm / Nape 25 cm
Overall Length 40 cm
Weight 155 gr

SENSITIVE CAP

- Lightest cap ever produced
- Breathable – 100% hand-tied
- Anti-slip Silicone strips – polyurethane patches for an optional use of double-sided tape
- Diamond Net
- Ear to ear Lace Front
- Available in 3 sizes: S, M, L



COLOR SHOWN 6/8SH30



COLOR SHOWN 6/8SH30



COLOR SHOWN 6/8SH30

AVAILABLE COLORS



2/4



4/6



8/32



8R10/12



8R27/30



8R14/25



9R28/25



6/8SH30



7SH16/101



LORY

100% REMY HUMAN HAIR WITH INTACT CUTICLE

CONFIDENCE
Cap



Hair Length
Front 37 cm / Crown 42 cm / Sides 37 cm / Nape 38 cm
Overall Length 55 cm
Weight 195 gr

CONFIDENCE CAP

- Breathable
- Strong hold with Anti-slip Silicone strips
- Diamond net
- Non-toxic and hypoallergenic
- Lace Front



COLOR SHOWN 7SH16/101



COLOR SHOWN 7SH16/101



COLOR SHOWN 7SH16/101

AVAILABLE COLORS





COLOR SHOWN 2/4SH8

ALEXIS

100% REMY HUMAN HAIR WITH INTACT CUTICLE

CONFIDENCE
Cap



Hair Length
Front 27 cm / Crown 27 cm / Sides 27 cm / Nape 27 cm
Overall Length 46 cm
Weight 150 gr

CONFIDENCE CAP

- Breathable
- Strong hold with Anti-slip Silicone strips
- Diamond net
- Non-toxic and hypoallergenic
- Lace Front



COLOR SHOWN 2/4SH8



COLOR SHOWN 2/4SH8



COLOR SHOWN 2/4SH8

AVAILABLE COLORS





COLOR SHOWN 213F

MIA

100% REMY HUMAN HAIR WITH INTACT CUTICLE

CONFIDENCE
Cap



Hair Length
Front 30 cm / Crown 30 cm / Sides 24 cm / Nape 25 cm
Overall Length 45 cm
Weight 135 gr

CONFIDENCE CAP

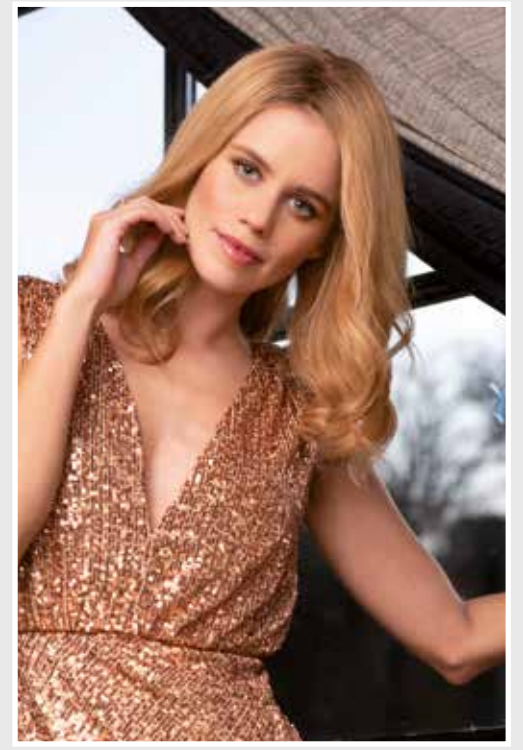
- Breathable
- Strong hold with Anti-slip Silicone strips
- Diamond net
- Non-toxic and hypoallergenic
- Lace Front



COLOR SHOWN 213F



COLOR SHOWN 213F



COLOR SHOWN 213F

AVAILABLE COLORS





COLOR SHOWN 10R14/26

JOELLE

100% HUMAN HAIR

CONFIDENCE
Cap



Hair Length
Front 19 cm / Crown 21 cm / Sides 18 cm / Nape 9 cm
Weight 109 gr

CONFIDENCE CAP

- Breathable
- Strong hold with Anti-slip Silicone strips
- Monofilament top
- Non-toxic and hypoallergenic
- Lace Front



COLOR SHOWN 10R14/26



COLOR SHOWN 10R14/26



COLOR SHOWN 10R14/26

AVAILABLE COLORS



4/6



8/32



4R30/33



8R10/12



9R28/25



10R14/26



4/6SH28



10/12SH25



COLOR SHOWN 4/6

GIULIA

100% HUMAN HAIR

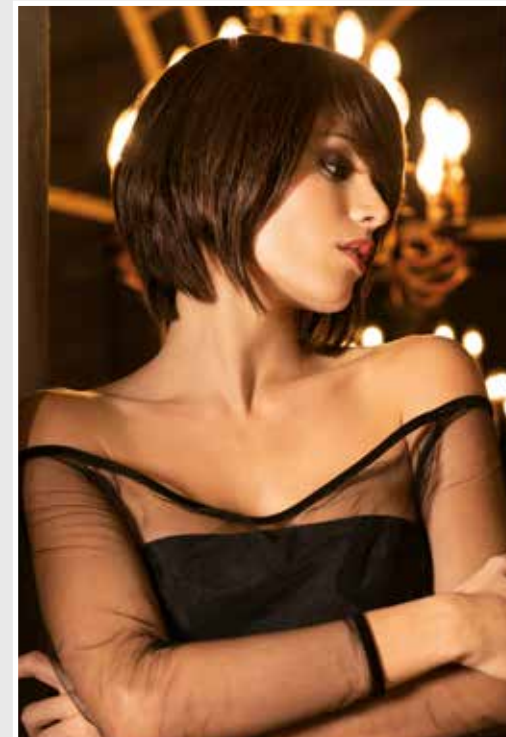
CONFIDENCE
Cap



Hair Length
Front 13 cm / Crown 20 cm / Sides 18 cm / Nape 9 cm
Weight 96 gr

CONFIDENCE CAP

- Breathable
- Strong hold with Anti-slip Silicone strips
- Monofilament top
- Non-toxic and hypoallergenic
- Lace Front



COLOR SHOWN 4/6



COLOR SHOWN 4/6



COLOR SHOWN 4/6

AVAILABLE COLORS





COLOR SHOWN 4/6

BRENDA

100% HUMAN HAIR

CONFIDENCE
Cap



Hair Length
Front 7 cm / Crown 9 cm / Sides 7 cm / Nape 5 cm
Weight 52 gr

CONFIDENCE CAP

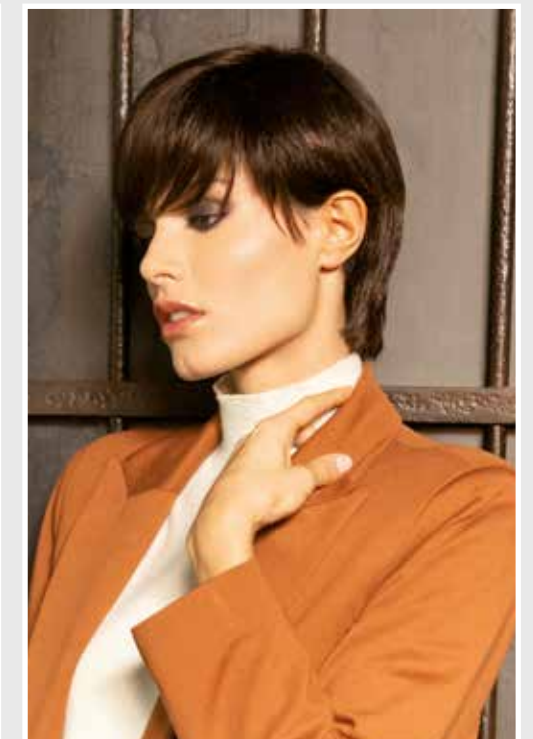
- Breathable
- Strong hold with Anti-slip Silicone strips
- Monofilament top
- Non-toxic and hypoallergenic
- Lace Front



COLOR SHOWN 4/6

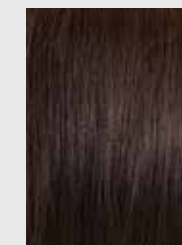


COLOR SHOWN 4/6

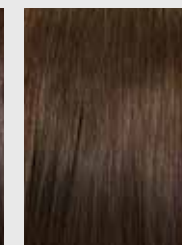


COLOR SHOWN 4/6

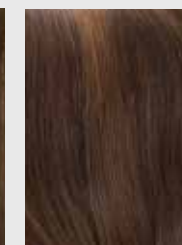
AVAILABLE COLORS



4/6



8



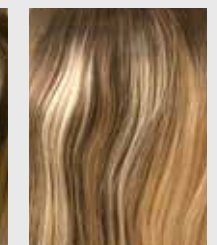
6/8/10



10/12



9R28/25



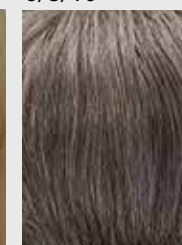
8R14/25



213F



614R



44



56F51

The grey colors are mixed with heat resistant fiber



COLOR SHOWN 2/4

SARAH

100% REMY HUMAN HAIR WITH INTACT CUTICLE

COMFORT
Cap



Hair Length
Front 32 cm / Crown 35 cm / Sides 35 cm / Nape 34 cm
Overall Length 50 cm
Weight 165 gr

COMFORT CAP

- Extra-light and breathable cap
- 100% hand-tied
- Monofilament top



COLOR SHOWN 2/4

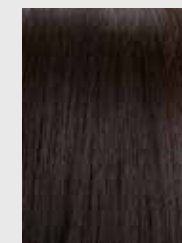


COLOR SHOWN 2/4

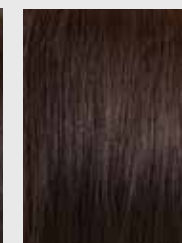


COLOR SHOWN 2/4

AVAILABLE COLORS



2/4



8



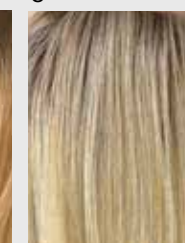
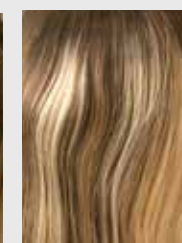
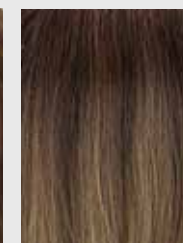
830



637



8R10/12



9R28/25

8R14/25

6R16/613

213F

614R



COLOR SHOWN 10/12SH25

VALERY

100% HUMAN HAIR

COMFORT
Cap



Hair Length
Front 27 cm / Crown 26 cm / Sides 18cm / Nape 11 cm
Weight 100 gr

COMFORT CAP

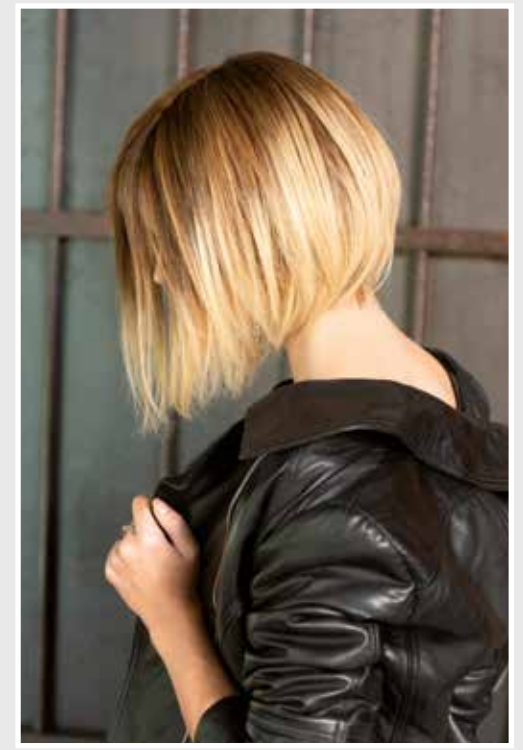
- Extra-light and breathable cap
- 100% hand-tied
- Monofilament top



COLOR SHOWN 10/12SH25



COLOR SHOWN 10/12SH25



COLOR SHOWN 10/12SH25

AVAILABLE COLORS





COLOR SHOWN 4R30/33

AURA

100% HUMAN HAIR

COMFORT
Cap



Hair Length
Front 16 cm / Crown 24 cm / Sides 21 cm / Nape 19 cm
Weight 98 gr

COMFORT CAP

- Extra-light and breathable cap
- 100% hand-tied
- Monofilament top



COLOR SHOWN 4R30/33

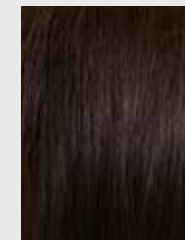


COLOR SHOWN 4R30/33



COLOR SHOWN 4R30/33

AVAILABLE COLORS



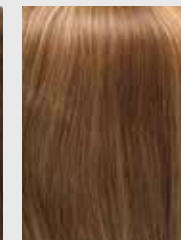
4



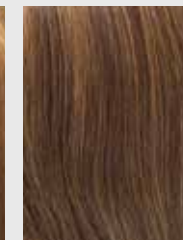
8/32



637



10/12



10/27



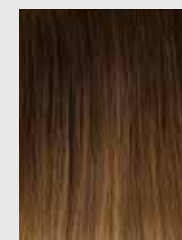
4R30/33



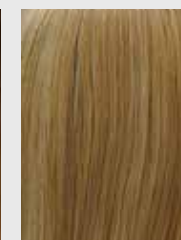
9R28/25



8R14/25



4/6SH28



213F



614R



SOPHIE

100% HUMAN HAIR

COMFORT
Cap



Hair Length
Front 12 cm / Crown 15 cm / Sides 11 cm / Nape 12 cm
Weight 58 gr

COMFORT CAP

- Extra-light and breathable cap
- 100% hand-tied
- Monofilament top



COLOR SHOWN 213F

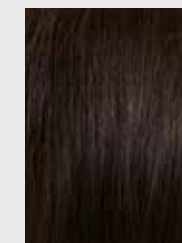


COLOR SHOWN 213F



COLOR SHOWN 213F

AVAILABLE COLORS



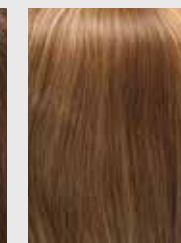
4



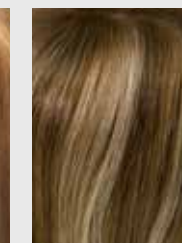
8/32



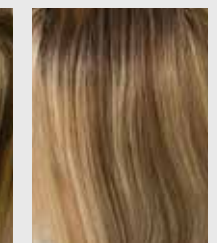
637



10/12



9R28/25



9R14/24



213F



614R



44



56F51

The grey colors are mixed with heat resistant fiber



COLOR SHOWN 213F



IRENE

100% REMY HUMAN HAIR WITH INTACT CUTICLE

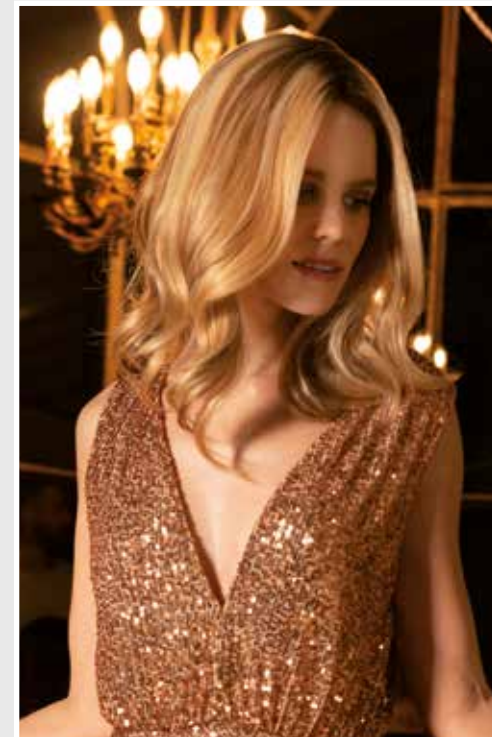
BASIC
Cap



Hair Length
Front 25 cm / Crown 33 cm / Sides 27 cm / Nape 24 cm
Overall Length 44 cm
Weight 150 gr

BASIC CAP

- Extremely resistant
- Breathable
- Monofilament top



COLOR SHOWN 8R14/25

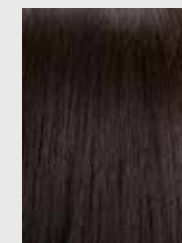


COLOR SHOWN 8R14/25

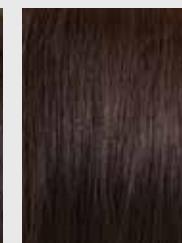


COLOR SHOWN 8R14/25

AVAILABLE COLORS



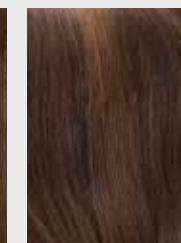
2/4



4/6



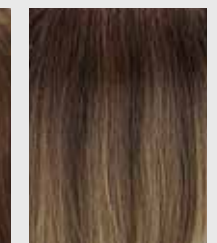
8



6/8/10



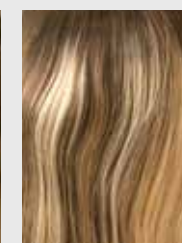
637



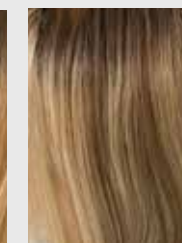
8R10/12



9R28/25



8R14/25



9R14/24



213F



COLOR SHOWN 8R14/25



COLOR SHOWN 801

ANGEL

100% HUMAN HAIR

BASIC
Cap



Hair Length
Front 15 cm / Crown 16 cm / Sides 13 cm / Nape 9 cm
Weight 92 gr

BASIC CAP

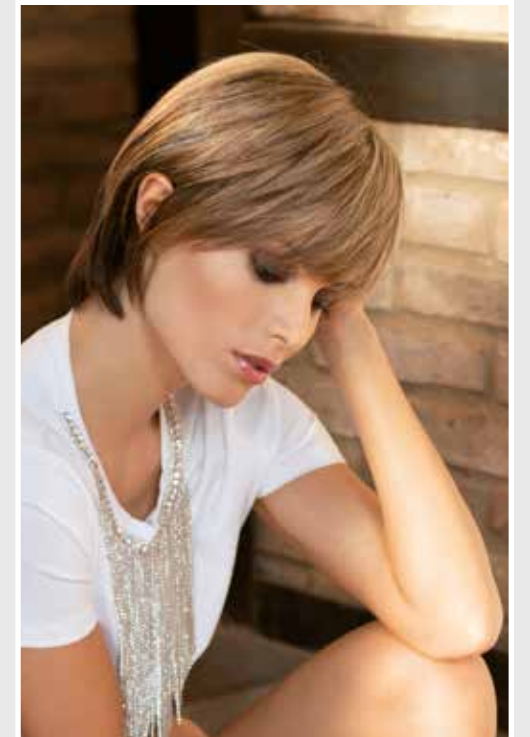
- Extremely resistant
- Breathable
- Monofilament top



COLOR SHOWN 801

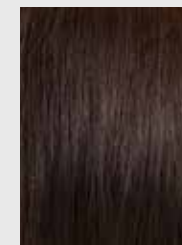


COLOR SHOWN 801



COLOR SHOWN 801

AVAILABLE COLORS



4/6



8/32



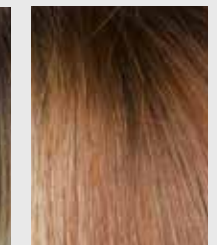
738A



801



8R10/12



8R27/30



8R14/25



9R28/25



COLOR SHOWN 9R14/24

HELEN

100% REMY HUMAN HAIR WITH INTACT CUTICLE

BASIC
Cap



Hair Length
Front 30 cm / Crown 30 cm / Sides 32 cm / Nape 12 cm
Weight 137 gr

BASIC CAP

- Extremely resistant
- Breathable
- Monofilament top



COLOR SHOWN 9R14/24



COLOR SHOWN 9R14/24



COLOR SHOWN 9R14/24

AVAILABLE COLORS



2/4



4/6



8



8R10/12



10R14/26



8R14/25



9R14/24



2R32/34

CARE AND MAINTENANCE PLUS 12 PRODUCTS

As hair on a wig is not attached to the scalp, it is unable to benefit from the substances naturally produced by the body to protect the hair itself.

Even Remy hair with intact cuticles, the best quality of hair available on the market, requires greater care than natural hair, and needs to be moisturized by using quality hair products which compensate this lack of nourishment. PLUS 12 is our new line of wig care and maintenance products, created specifically to help treated and colored hair. Each PLUS 12 product contains a blend of 12 natural active substances from organically grown plants obtained by enzymatic extraction, which in turn combine with other active ingredients chosen specifically and found in our Plus 12 products.

The synergetic action of the various extracts gives a complete and effective phytocomplex, to restructure, nourish and strengthen the hair, from the roots to the ends.

All PLUS 12 wig care and maintenance products are free from sulfates, silicone, mineral oils, parabens and CMIT/MIT.



PLUS 12 MULTI-ACTION RESTRUCTURING SHAMPOO

Multi-functional shampoo for treated and colored hair, ideal for wigs with human hair.

Contains various active substances and amino acids, such as arginine, to restructure, reinforce and protect brittle and damaged hair, giving strength and nourishment to the entire hair structure.

Keratin and wheat protein nourish the hair right down to the cortex, protecting the hair from root to tip increasing brightness and shine.



PLUS 12 NOURISHING AND RESTRUCTURING MASK

Its restructuring and reinforcing action is ideal for treated and colored hair, and specific for human hair wigs.

It nourishes deep down, giving body and bounce to brittle and damaged hair which tends to break.

Shea butter and olive oil strengthen dry and damaged hair, increasing its resistance to the mechanical stress caused by styling.

It reduces split ends and helps prevent their formation.



PLUS 12 LOTION WITH RESTRUCTURING KERATIN LIQUID

This spray lotion should be used after every wash. Ideal for wigs with natural human hair.

With its nourishing, strengthening and protective action, this lotion is ideal for the treatment of brittle and damaged hair.

It is particularly recommended for stressed or treated hair.

It makes styling easier and protects against heat stress, so you can use straightening irons with no problem.

It contains a special, latest generation quaternized KERATIN which rebuilds the damaged cuticles, giving a uniform appearance to the hair and restoring shine.



HAIR BRUSH FOR HUMAN HAIR WIGS

Our brush with Kotibe Wood is specifically designed for natural hair wigs. We recommend brushing your wig several times a day, especially if the hair is very long.

Regular brushing keeps the cuticles closed, and prevents tangling.



FAIR FASHION[®]
NATURAL LINE
The Glamour of Italian Fashion

Fair Fashion S.r.l. Via Stalingrado, 71/5B - 40128 - Bologna - Italy - Tel. +39 051 327184
www.natural-line.com - www.fairfashion.it - info@fairfashion.it



Seguici su Facebook
Fair Fashion Natural Line